

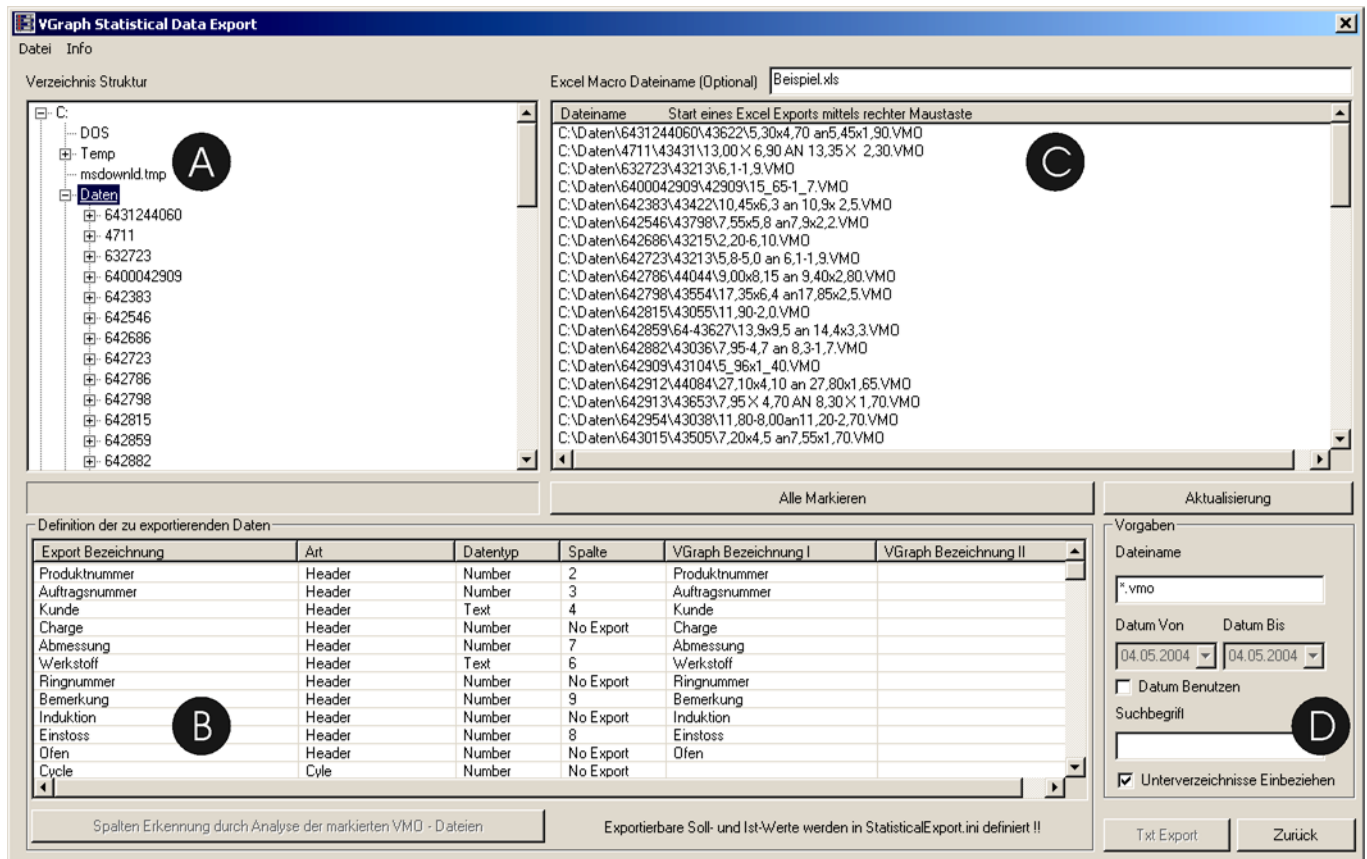
## VGraph Option: Main Statistics, Version 1.0

More important than ever: Quality must not only be produced but also be documented!

The basic VGraph program offers all options of documentation and statistical evaluation when coils are measured. Statistics on several coils, which have been recorded by VGraph, can be generated by the „Main Statistics“ option, described in short below, so that a larger amount of measurement documents can be administrated.

The main thought is to prepare the measurement files, stored on the hard disk, so that their contents can be evaluated user specifically by Microsoft Excel (or similar programs, allowing an easy text import). In detail, the VGraph option „Main Statistics“ will support you in

- Finding measurement documents
- Selecting relevant measurement data
- Combining complete lists
- Exporting to MS Excel format
- Integrating of user specific generated MS Excel macros.



**Excel Macro Dateiname (Optional)** Beispiel.xls

**Dateiname** Start eines Excel Exports mittels rechter Maustaste

C:\Daten\6431244060\43622\5,30x4,70 an5,45x1,90.VMO  
 C:\Daten\4711\43431\13,00x 6,90 AN 13,35x 2,30.VMO  
 C:\Daten\632723\43213\6,1-1,9.VMO  
 C:\Daten\6400042909\42909\15\_65-1\_7.VMO  
 C:\Daten\642383\43422\10,45x6,3 an 10,9x 2,5.VMO  
 C:\Daten\642546\43798\7,55x5,8 an7,9x2,2.VMO  
 C:\Daten\642686\43215\2,20-6,10.VMO  
 C:\Daten\642723\43213\5,8-5,0 an 6,1-1,9.VMO  
 C:\Daten\642786\44044\9,00x8,15 an 9,40x2,80.VMO  
 C:\Daten\642798\43554\17,35x6,4 an17,85x2,5.VMO  
 C:\Daten\642815\43055\11,90-2,0.VMO  
 C:\Daten\642859\64-43627\13,9x9,5 an 14,4x3,3.VMO  
 C:\Daten\642882\43036\7,95-4,7 an 8,3-1,7.VMO  
 C:\Daten\642909\43104\5\_96x1\_40.VMO  
 C:\Daten\642912\44084\27,10x4,10 an 27,80x1,65.VMO  
 C:\Daten\642913\43653\7,95x 4,70 AN 8,30x 1,70.VMO  
 C:\Daten\642954\43038\11,80-8,00an11,20-2,70.VMO  
 C:\Daten\643015\43505\7,20x4,5 an7,55x1,70.VMO

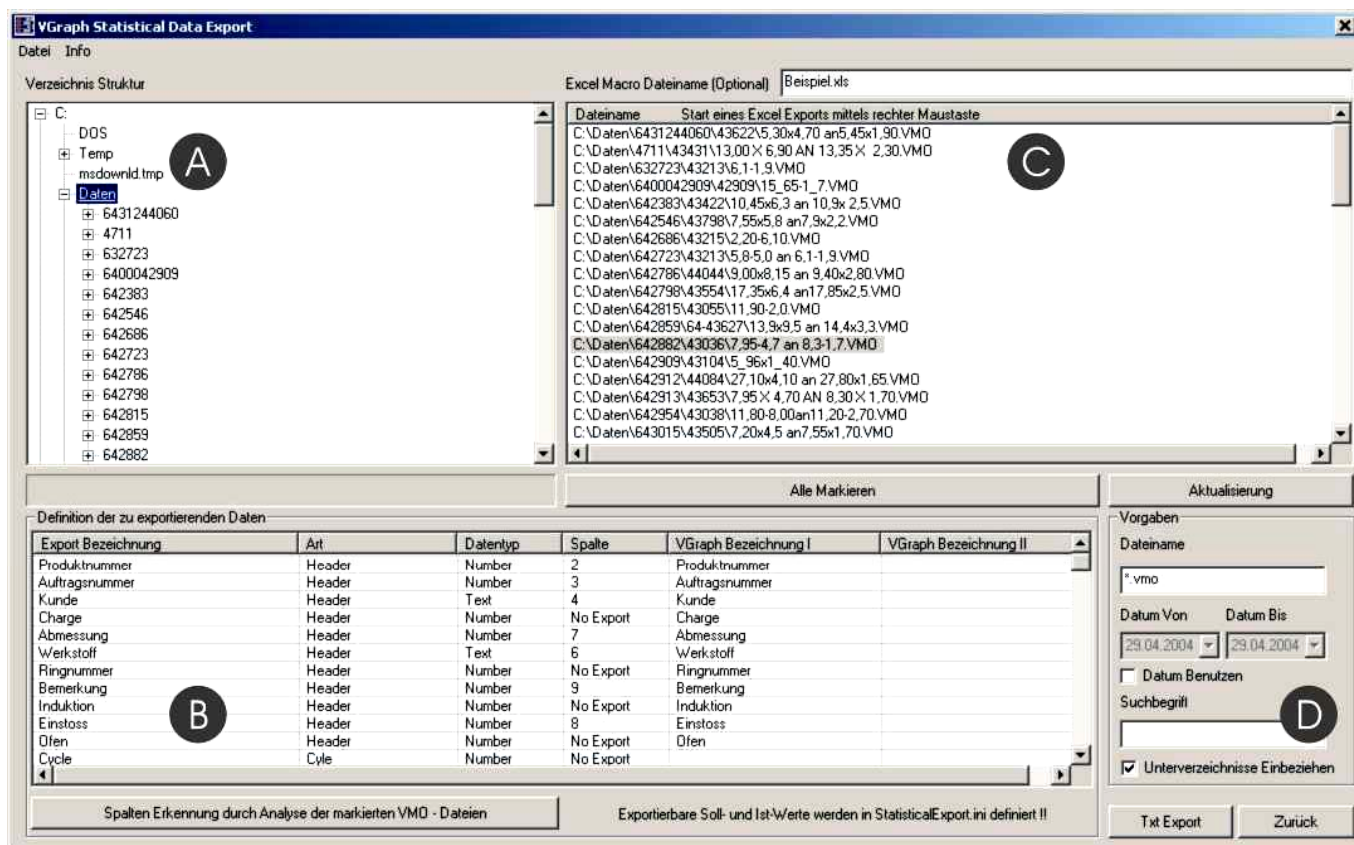
Export Bezeichnung	Art	Datentyp	Spalte	VGraph Bezeichnung I	VGraph Bezeichnung II
Produktnummer	Header	Number	2	Produktnummer	
Auftragsnummer	Header	Number	3	Auftragsnummer	
Kunde	Header	Text	4	Kunde	
Charge	Header	Number	No Export	Charge	
Abmessung	Header	Number	7	Abmessung	
Werkstoff	Header	Text	6	Werkstoff	
Ringnummer	Header	Number	No Export	Ringnummer	
Bemerkung	Header	Number	9	Bemerkung	
Induktion	Header	Number	No Export	Induktion	
Einstoß	Header	Number	8	Einstoß	
Ofen	Header	Number	No Export	Ofen	
Cycle	Cyle	Number	No Export		

Spalten Erkennung durch Analyse der markierten VMO - Dateien

Exportierbare Soll- und Ist-Werte werden in StatisticalExport.ini definiert !!

Vorgaben:  
 Dateiname: \*.vmo  
 Datum Von: 04.05.2004 Datum Bis: 04.05.2004  
 Datum Benutzen  
 Suchbegriff:   
 Unterverzeichnisse Einbeziehen

Text Export Zurück



## Short User Manual

After you have specified where the VGraph measurement files are stored in your PC (screen section A), the file names are indicated in screen section C. You can now start a „Column Detection“ in screen section B, determining once which measurement data are actually included in your documents. In screen section B, you specify which data are of interest for you and to which column positions they are to be exported later.

These adjustments should be stored under a configuration name so that once generated export data can be used again at any time. Principally, all data from the measurement document as well as the parameters and statistical results of each measurement can be exported, but not the individual measurement values.

Individual measurement documents are found by navigating in screen section A. In addition, the search can be limited in screen section D by defining search terms or dates. You should generally try to limit the data to be exported to actually needed data as much as possible.

By marking files in screen section C and clicking the right mouse key, the data are exported to MS Excel format and Excel is started.

Microsoft Excel - Beispiel.xls

File Edit View Insert Format Extras Data Window ?

Z26S7 = =\VGraph Rohdaten Sheet'IZ(-2)S

Start einer kundenspezifischen Excel VBA Berechnungsfunktion .....

Nr	Produktnummer	Auftragsnummer	Kunde	Datum	Werkstoff	Abmessung	Einstoss	Länge [m]	Delta D [µm]	cpk	Bemerkung
0	434267	43013	Kunde1	20.1.04 6:04	Werkstoff XYZ	3-28x0-50	2	1200	4,35	1,36	Leichter Gr
1	247112	43431	Kunde2	30.9.04 0:00	Werkstoff ABC	3-28x0-51	3	1267	2,46	1,41	
2	632723	43213	Kunde3	1.10.04 7:46	Werkstoff XYZ	3-28x0-52	3	1000	7,37	1,22	Toleranz nicht haltb
3	644290	42909	Kunde4	12.11.03 16:02	Werkstoff ABC	3-28x0-53	3	9722	7,15	1,31	
4	642383	43422	Kunde5	14.1.04 0:35	Werkstoff XYZ	3-28x0-54	3	2972	4,25	1,37	
5	642546	43798	Kunde6	2.4.04 15:18	Werkstoff ABC	3-28x0-55	4	9878	5,23	1,35	
6	642686	43215	Kunde7	1.9.04 15:18	Werkstoff XYZ	3-28x0-56	3	2989	7,56	1,23	
7	642723	43213	Kunde8	26.1.04 0:00	Werkstoff ABC	3-28x0-57	3	200	4,34	1,34	
8	642786	44044	Kunde9	27.1.04 0:00	Werkstoff XYZ	3-28x0-58	3	2872	5,36	1,31	
9	642796	43554	Kunde10	28.1.04 8:00	Werkstoff ABC	3-28x0-59	3	2906	5,67	1,40	
10	642815	43055	Kunde11	1.8.04 21:35	Werkstoff XYZ	3-28x0-60	3	2890	5,98	1,42	
11	642859	43627	Kunde12	2.3.04 11:27	Werkstoff ABC	3-28x0-61	2	2089	8,64	1,24	
12	642882	43036	Kunde13	1.9.04 8:58	Werkstoff XYZ	3-28x0-62	3	2890	7,36	1,26	
13	642909	43104	Kunde14	1.9.04 0:00	Werkstoff ABC	3-28x0-63	3	2882	6,25	1,28	
14	642912	44084	Kunde15	2.9.04 17:21	Werkstoff XYZ	3-28x0-64	3	3533	3,45	1,36	
15	642913	43653	Kunde16	21.1.04 6:10	Werkstoff ABC	3-28x0-65	3	4535	8,38	1,24	
16	642954	43038	Kunde17	13.1.04 8:26	Werkstoff XYZ	3-28x0-66	3	3535	4,73	1,40	
17	643015	43505	Kunde18	30.1.04 8:09	Werkstoff ABC	3-28x0-67	3	3535	6,36	1,36	
18	643019	43060	Kunde19	1.12.04 14:23	Werkstoff XYZ	3-28x0-68	3	2224	8,90	1,34	
19	643019	43658	Kunde20	1.12.04 17:00	Werkstoff ABC	3-28x0-69	3	4222	11,23	1,20	Toleranz nicht haltb
20	643031	43800	Kunde21	2.3.04 15:53	Werkstoff XYZ	3-28x0-70	3	4242	7,32	1,20	
21	643031	47094	Kunde22	2.4.04 7:08	Werkstoff ABC	3-28x0-71	4	2422	7,36	1,36	
22	643031	43794	Kunde23	2.4.04 7:11	Werkstoff XYZ	3-28x0-72	4	2424	4,36	1,39	
23	643031	43100	Kunde24	14.1.04 8:21	Werkstoff ABC	3-28x0-73	2	2927	7,35	1,35	
24	643031	43469	Kunde25	16.1.04 7:18	Werkstoff XYZ	3-28x0-74	2	9282	5,37	1,34	
25	643031	43065	Kunde26	1.8.04 8:10	Werkstoff ABC	3-28x0-75	3	2424	7,38	1,30	
26	643031	43625	Kunde27	2.8.04 0:00	Werkstoff XYZ	3-28x0-76	3	2451	7,34	1,32	
27	643031	43621	Kunde28	25.1.04 23:13	Werkstoff ABC	3-28x0-77	3	8483	9,12	1,29	
28	643031	43622	Kunde29	23.1.04 15:33	Werkstoff XYZ	3-28x0-78	3	3433	5,23	1,40	
29	643031	43058	Kunde30	24.1.04 0:00	Werkstoff ABC	3-28x0-79	3	3433	6,23	1,38	
30	643031	42904	Kunde31	25.1.04 0:00	Werkstoff XYZ	3-28x0-80	3	2422	5,46	1,37	
31	643031	43430	Kunde32	28.1.04 1:08	Werkstoff ABC	3-28x0-81	3	2463	6,67	1,34	
32	643031	43104	Kunde33	18.12.03 13:09	Werkstoff XYZ	3-28x0-82	3	6896	6,56	1,20	Toleranz nicht haltb

VGraph Rohdaten Sheet / Tabelle1 / Anwenderspezifisches Sheet

By retrieving Excel macros, the data can quickly be transmitted to a definite format or specific reports. Evaluations and graphs can also quickly be done even with a minimum knowledge of Excel.

In addition, the program is supplied with a complete Excel evaluation which can be applied right away or which is the basis for further self-defined charts. We will be glad to generate further reports for you and to support you in the generation of self-written lists.