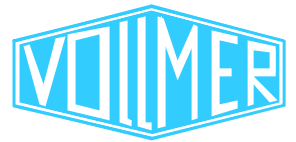


VRecoS - Measurement Data Visualization



Measurement and Filing

VRecoS is a program for the measurement of continuous factors that are filed under a current networkable Windows surface.

Up to 3 measurement tracks in one lot (such as a coil), e.g. thickness, width and speed, can be recorded, documented, filed and printed.

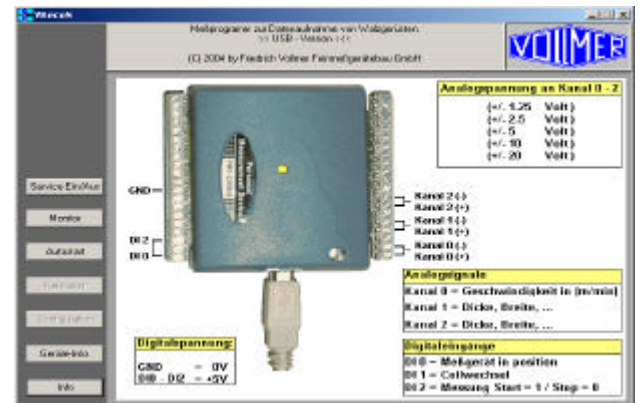
VRecoS is the „little brother“ of the VGraph system. VGraph records up to 16 measurement tracks in a lot, offering extensive statistical evaluations beyond the functions of documentation, storing and filing. VRecoS offers no statistical functions but has been designed as a modern recorder for additional storing functions.

VRecoS works with a recording frequency of max. 400 Hz. During the data recording, VRecoS keeps an adjustable measurement point distance within the recording frequency.

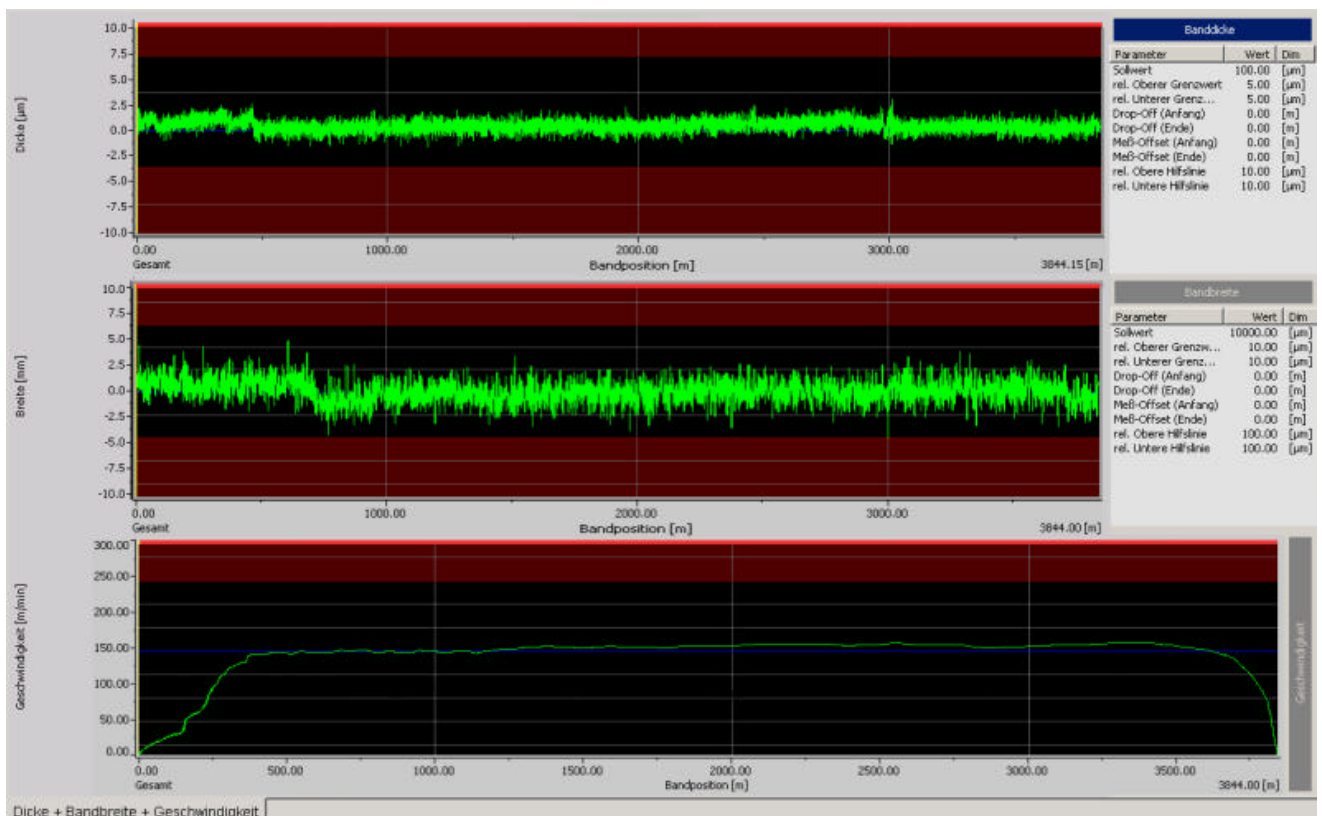
VRecoS usually detects the measurement signals by a specific USB measurement module, enabling an easy installation, an easy operation and - in case of a service - a quick exchange.

Data Acquisition for Highest Demands

The usefulness of measurement data is only as good as the type of data recording. The good quality of VRecoS is also shown by the fact that the system assigns the measurement values in a coil not only in dependence of time (as with many other systems) but also in dependence of the length.



Interface Survey USB Module



All three possible measurement tracks in one view

Measurement Window

The measurement window shows the current measurements in form of a dynamic graph. Which measurement tracks are to be indicated simultaneously - i.e. in one screen view - can be preset. Additional characteristic data (header data) of a measurement can also be entered. The display ranges of the individual tracks can freely be scaled.

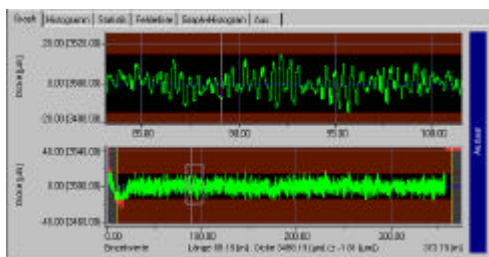
The numerical value for each single graphical value can be retrieved at any time.

Printouts

Adjustable printouts of the displays can be generated, providing a survey of the product as a QS protocol or an internal documentation right away.

Measurement Graph with Magnifier Function

The graphical display of a measurement track generally consists of a general view, an adjustable partial view (magnifier) and the currently preset measurement parameters (nominal values, tolerances etc.). You decide what is to be indicated (e.g. only a general view and magnifier as in the display below).



The current display section of the partial view is marked in the general view by a frame that can be shifted at random.

System Conditions

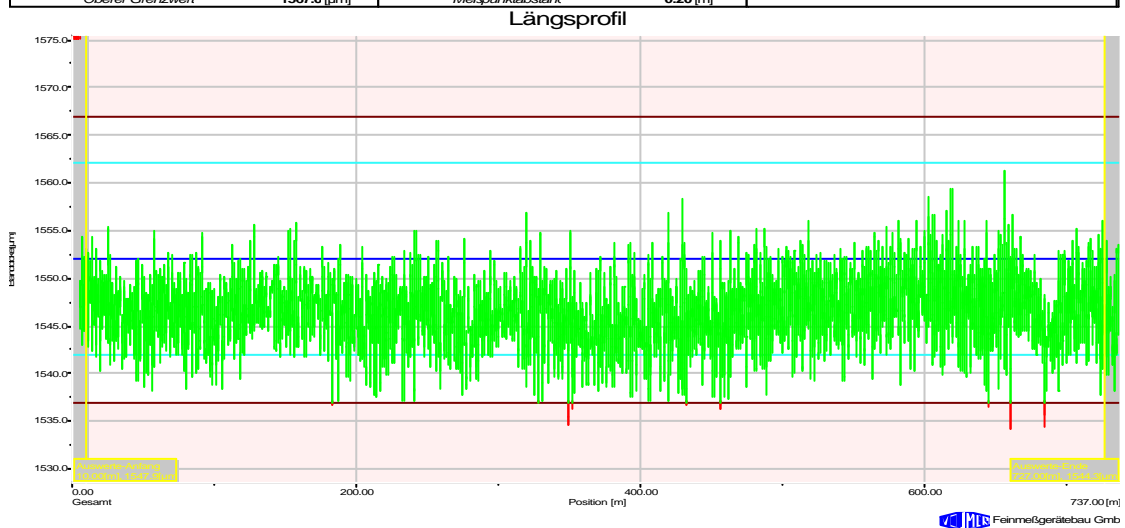
Current PC with Windows operating system.

Current recommendations:

- Pentium 4 or AMD Athlon
- Processor cycle from 1GHz upwards
- 256MB main memory
- Windows compatible color printer
- Windows 2000 / XP
- 40 GB hard disk
- CD /CDRW drive
- Network board
- Free USB slot (1.1 or 2.0)

(The analog input voltage can be chosen in the ranges $\pm 20V$, $\pm 10V$, $\pm 5V$, $\pm 2V$ or $\pm 1V$. Important: This adjustment applies to **all three** inputs likewise !)
03/2005

Name	Address			
AK-Nummer	2150121	Ring	1	Material
Bemerkung		Dateiname	2150121_1	7222
Messung	1	Längsprofil	1. Messung	Datum
Uhrzeit	17:58:57	Probleme		Messposition
Meßlänge	737.00 [m]	Sollwert	1552.0 [µm]	Unterer Grenzwert
Oberer Grenzwert	1567.0 [µm]	Meßpunktabstark	0.20 [m]	1537.0 [µm]



Printout of a measurement track